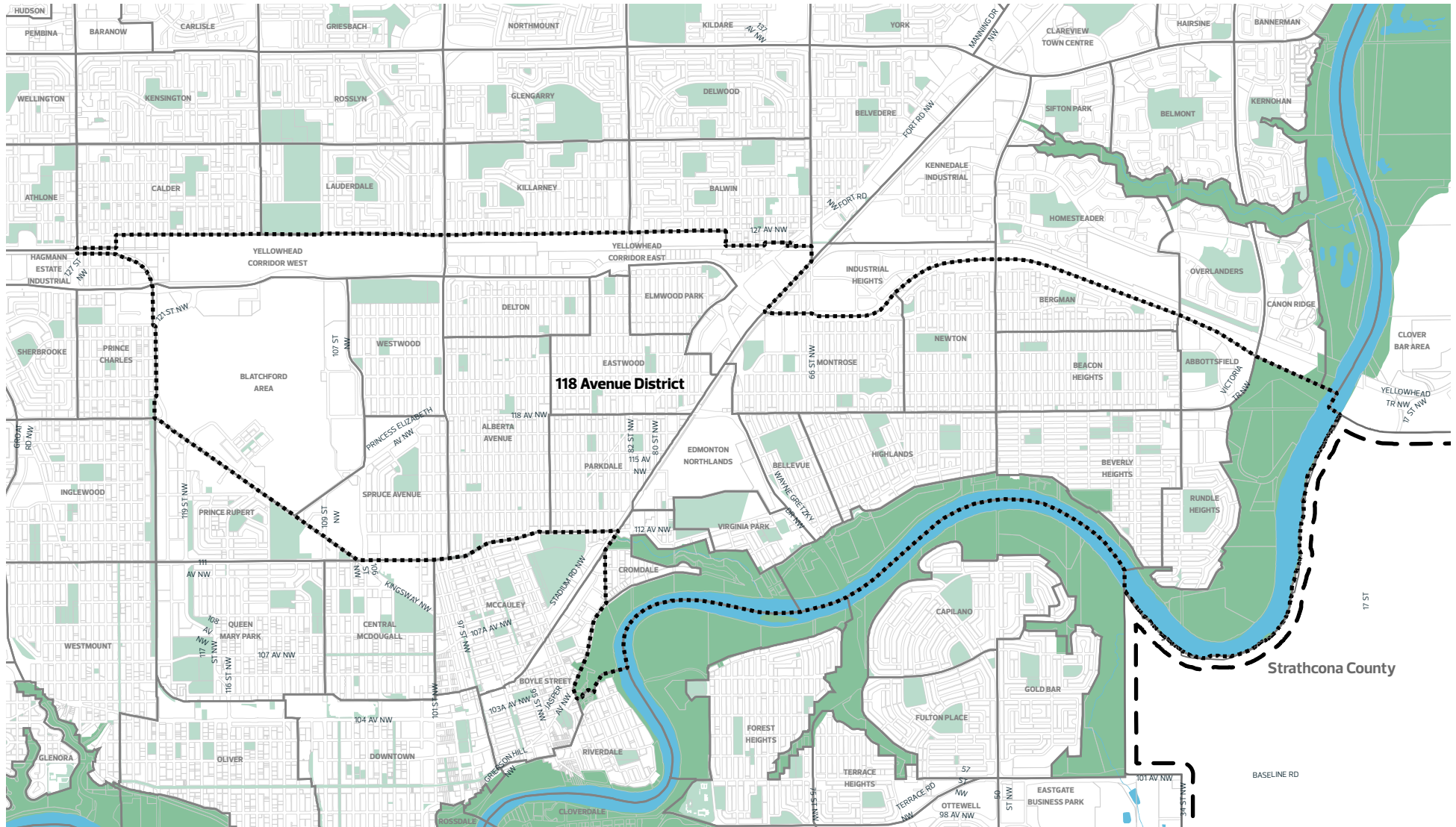


# 118 Avenue

## NEIGHBOURHOOD MAP



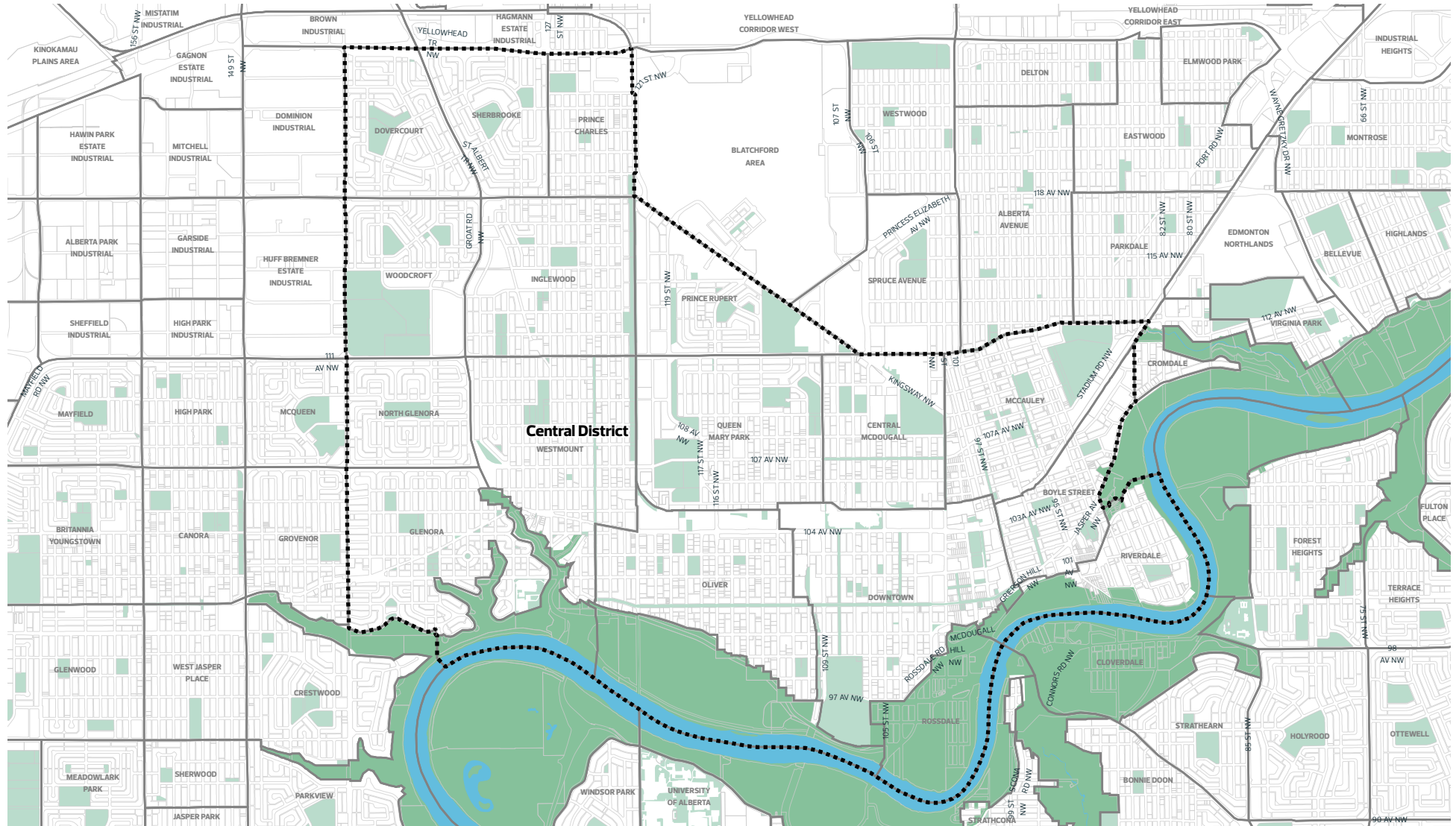
-  City Boundary
-  District Boundary
-  Neighbourhood Boundary
-  Water Body
-  North Saskatchewan River Valley and Ravine System (ARP)
-  Open Space - Current\*

\*Open space data is under review on an ongoing basis and subject to change



# Central

## NEIGHBOURHOOD MAP



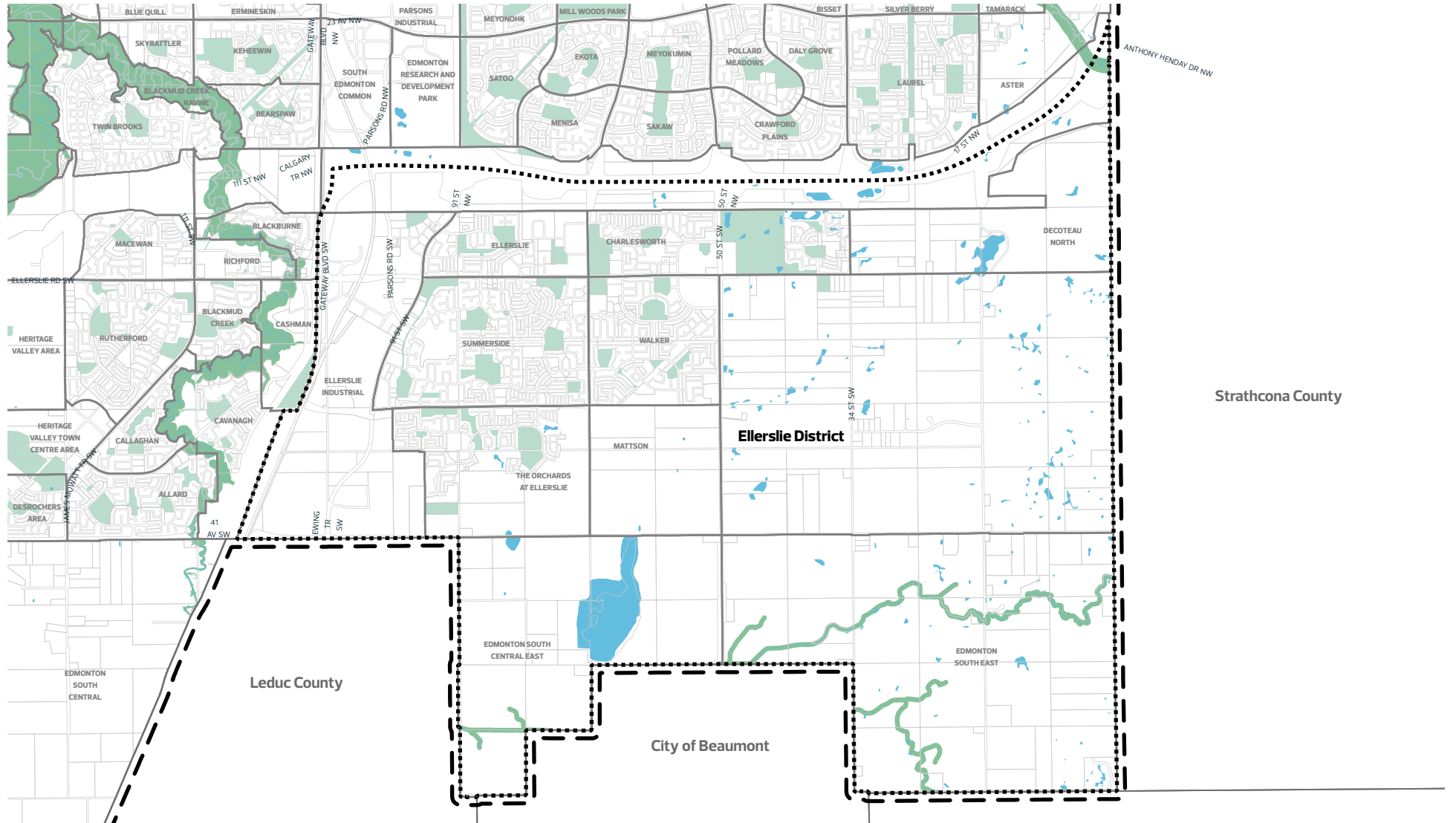
-  City Boundary
-  District Boundary
-  Neighbourhood Boundary
-  Water Body
-  North Saskatchewan River Valley and Ravine System (ARP)
-  Open Space - Current\*

\*Open space data is under review on an ongoing basis and subject to change



# Ellerslie

## NEIGHBOURHOOD MAP



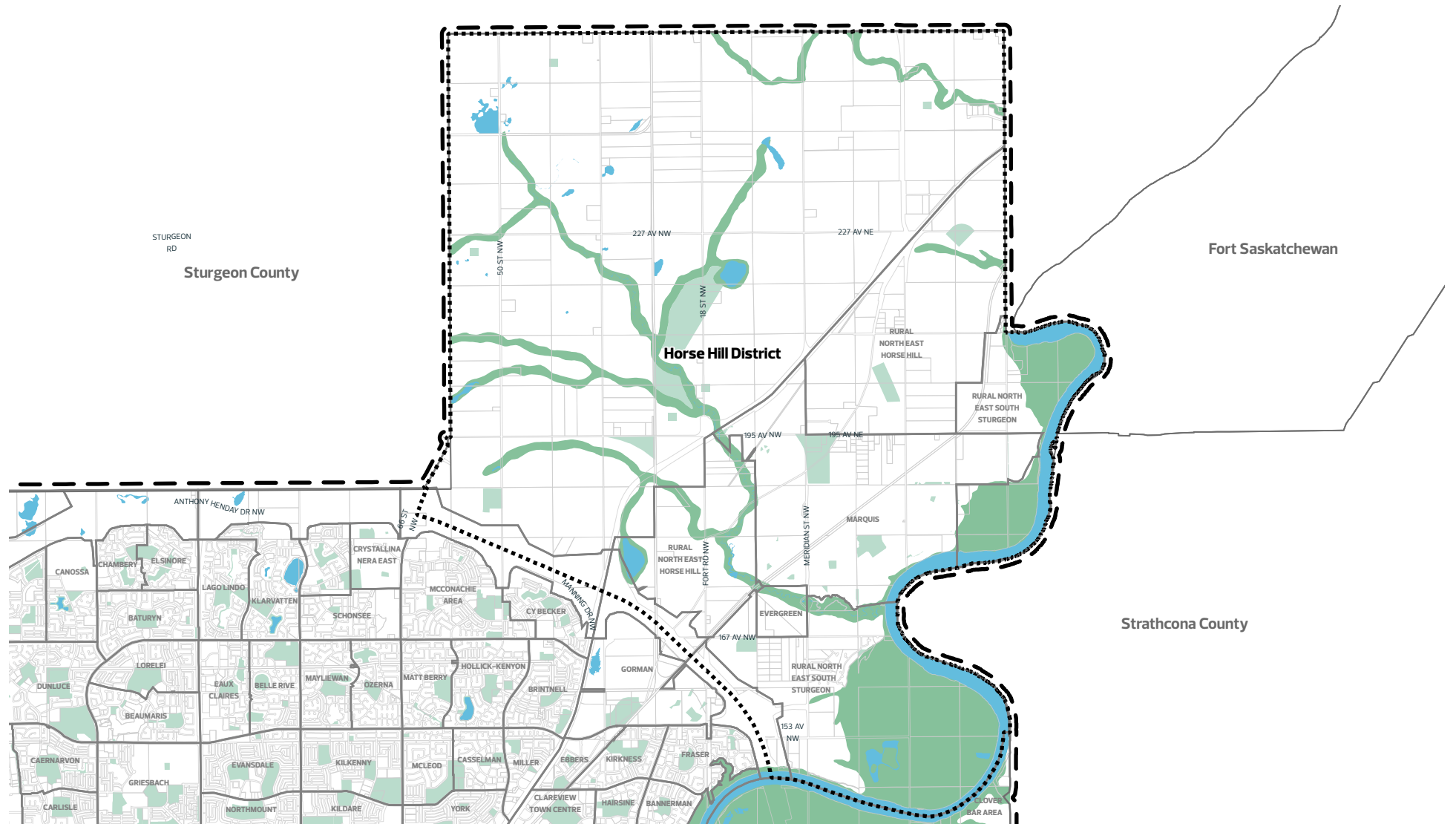
-  City Boundary
-  District Boundary
-  Neighbourhood Boundary
-  Water Body
-  North Saskatchewan River Valley and Ravine System (ARP)
-  Open Space - Current\*

\*Open space data is under review on an ongoing basis and subject to change



# Horse Hill

## NEIGHBOURHOOD MAP



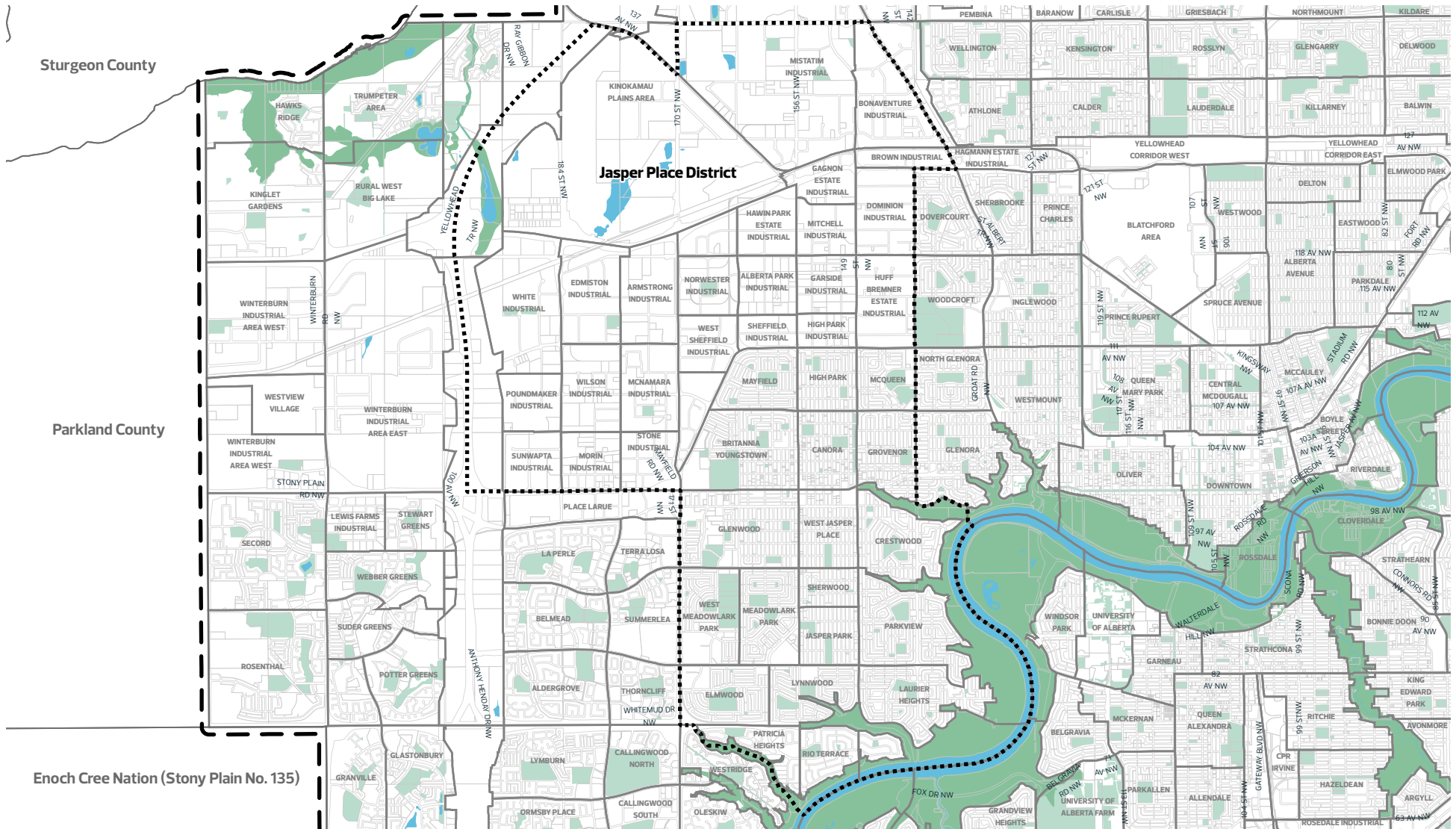
-  City Boundary
-  District Boundary
-  Neighbourhood Boundary
-  Water Body
-  North Saskatchewan River Valley and Ravine System (ARP)
-  Open Space - Current\*

\*Open space data is under review on an ongoing basis and subject to change



# Jasper Place

## NEIGHBOURHOOD MAP



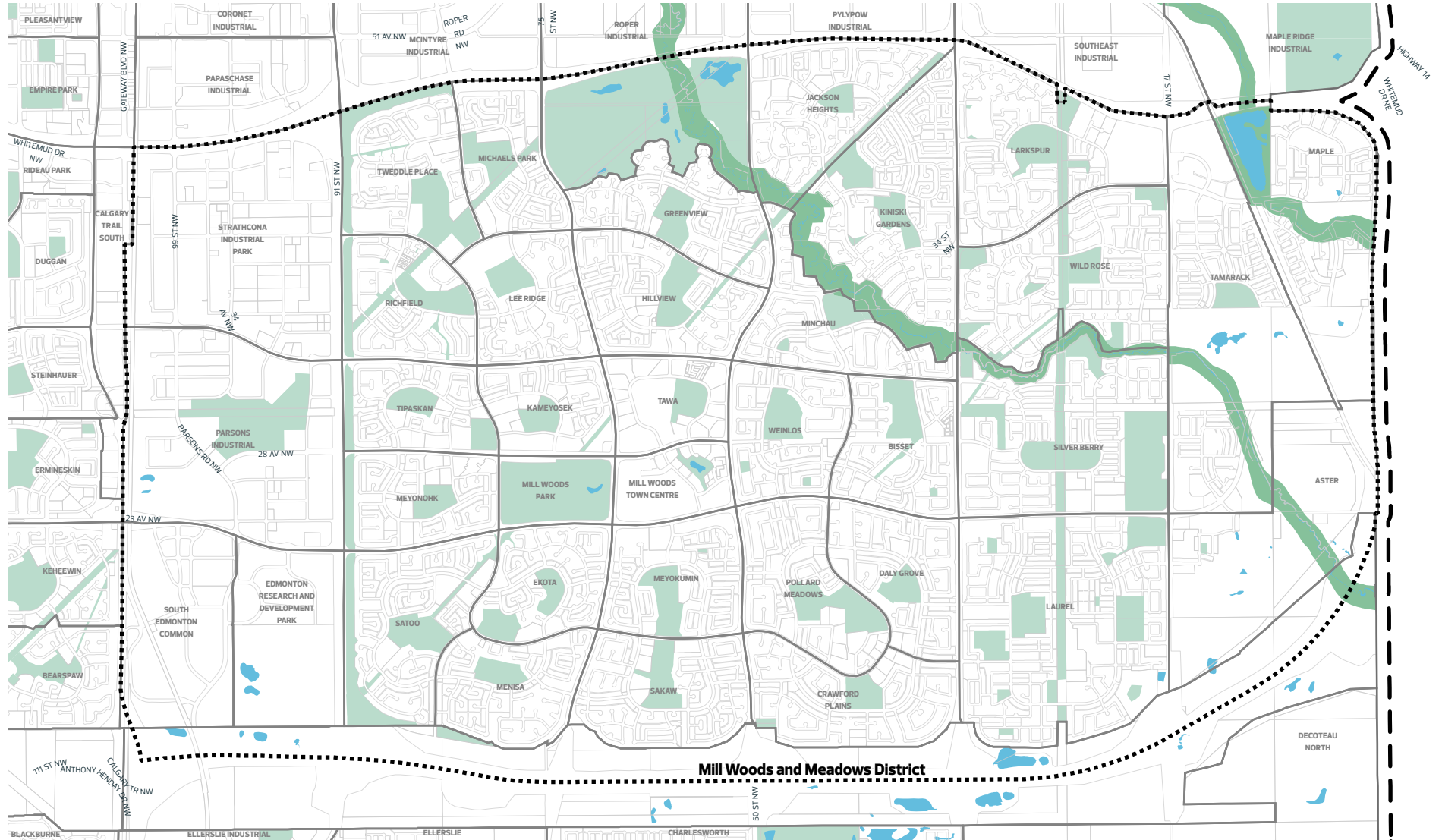
-  City Boundary
-  District Boundary
-  Neighbourhood Boundary
-  Water Body
-  North Saskatchewan River Valley and Ravine System (ARP)
-  Open Space - Current\*

\*Open space data is under review on an ongoing basis and subject to change



# Mill Woods and Meadows

## NEIGHBOURHOOD MAP



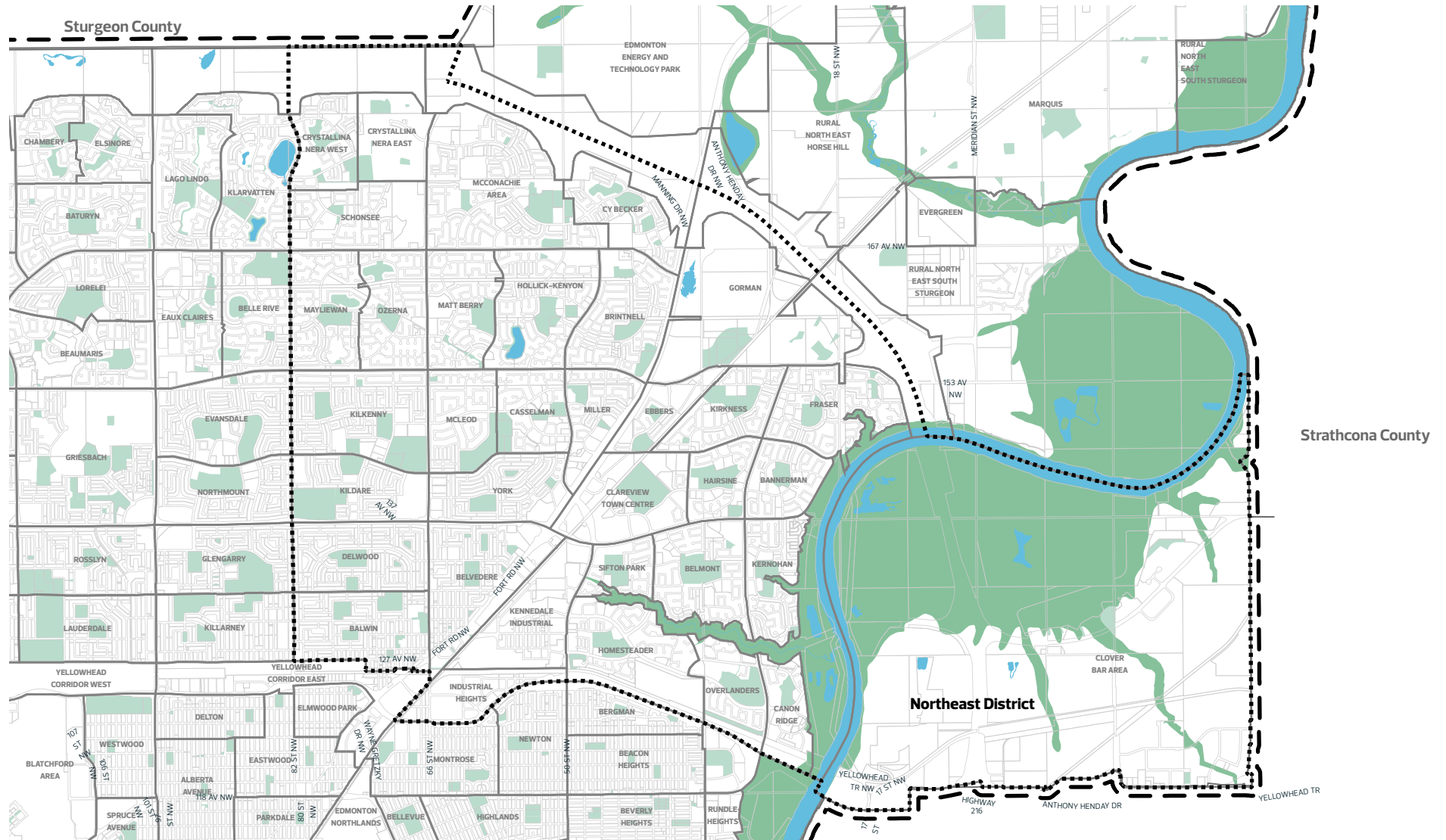
- City Boundary
- District Boundary
- Neighbourhood Boundary
- Water Body
- North Saskatchewan River Valley and Ravine System (ARP)
- Open Space - Current\*

\*Open space data is under review on an ongoing basis and subject to change



# Northeast

## NEIGHBOURHOOD MAP



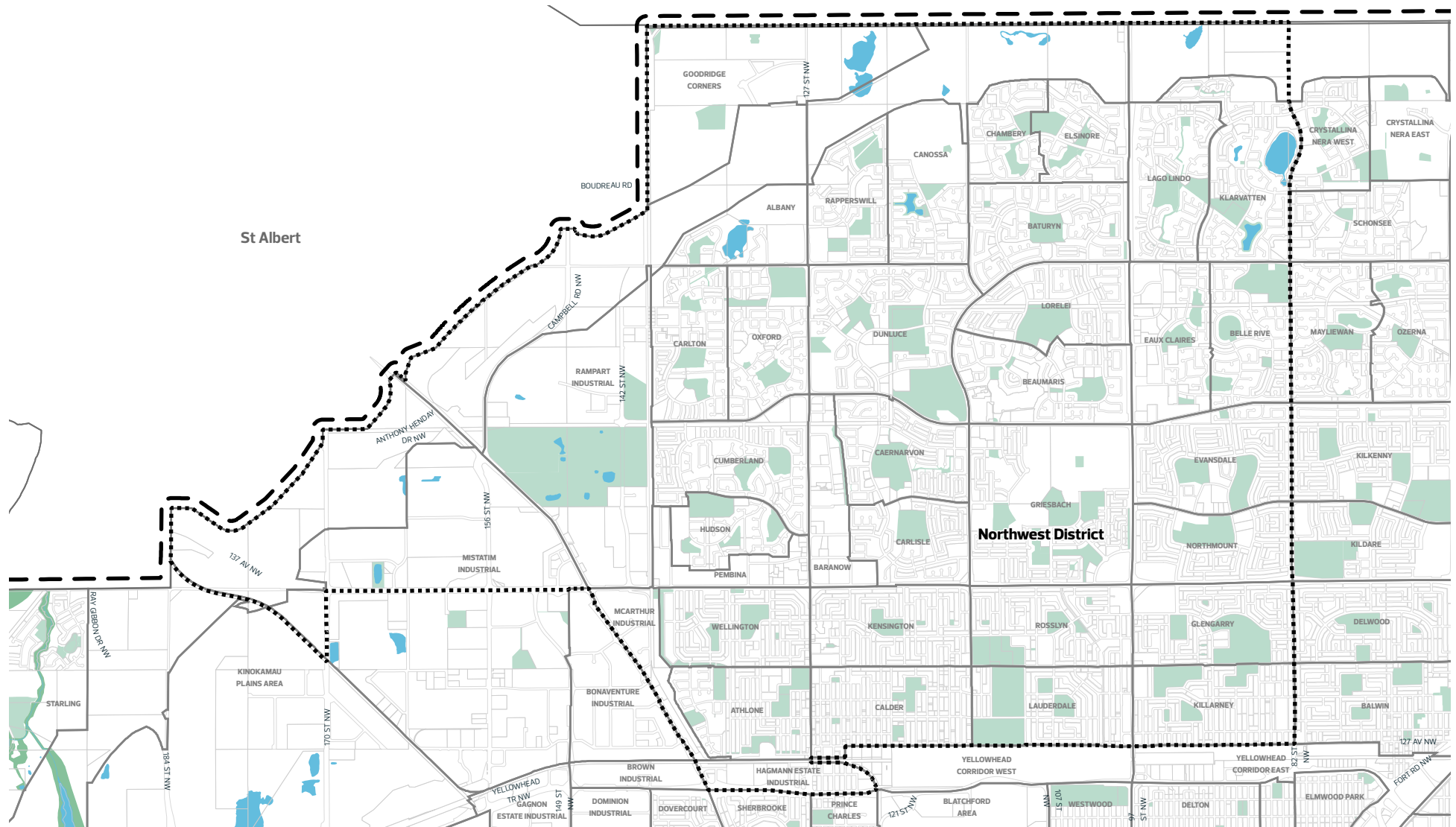
- City Boundary
- District Boundary
- Neighbourhood Boundary
- Water Body
- North Saskatchewan River Valley and Ravine System (ARP)
- Open Space - Current\*

\*Open space data is under review on an ongoing basis and subject to change



# Northwest

## NEIGHBOURHOOD MAP



-  City Boundary
-  District Boundary
-  Neighbourhood Boundary
-  Water Body
-  North Saskatchewan River Valley and Ravine System (ARP)
-  Open Space - Current\*

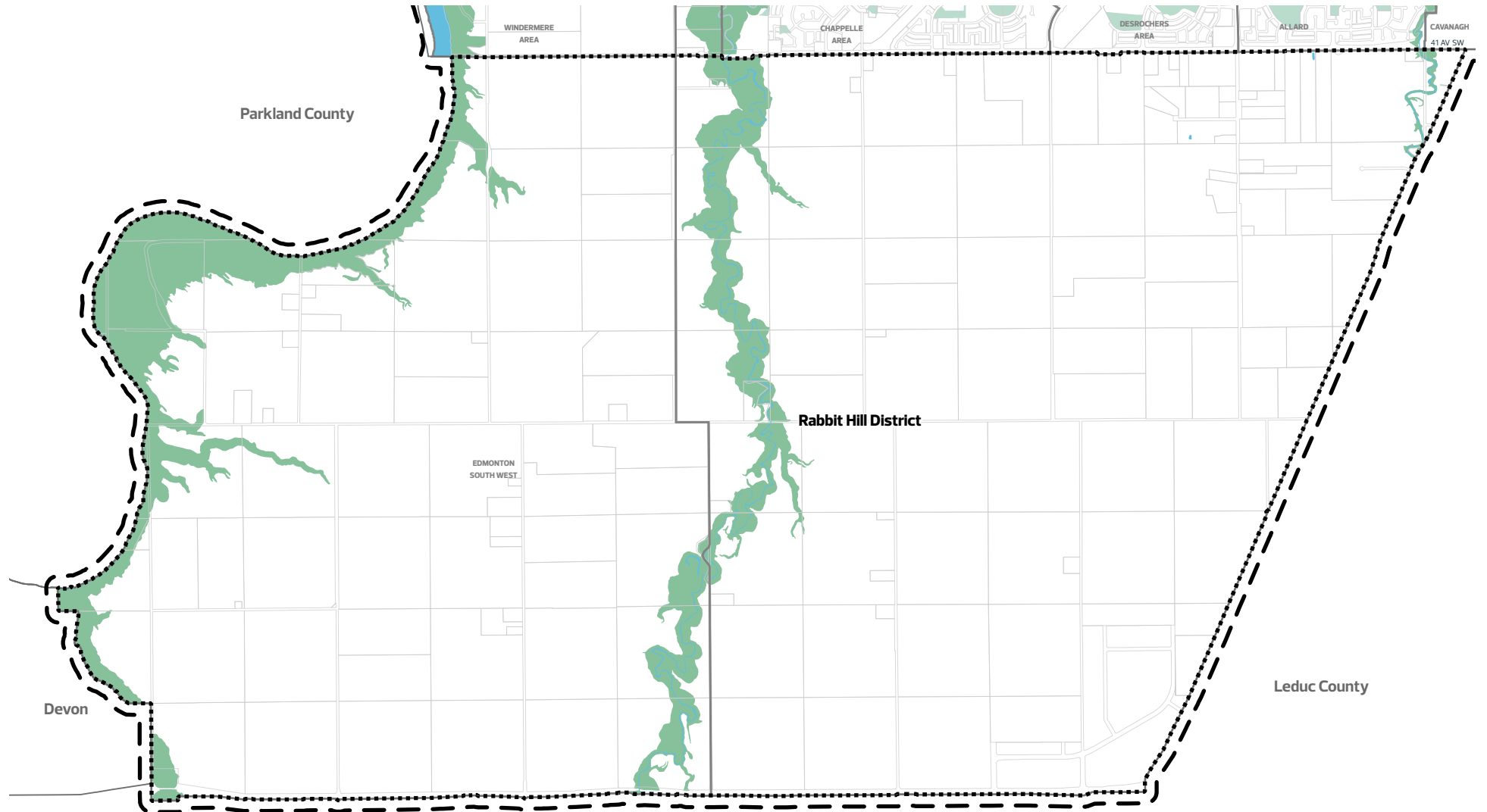
\*Open space data is under review on an ongoing basis and subject to change





# Rabbit Hill

## NEIGHBOURHOOD MAP



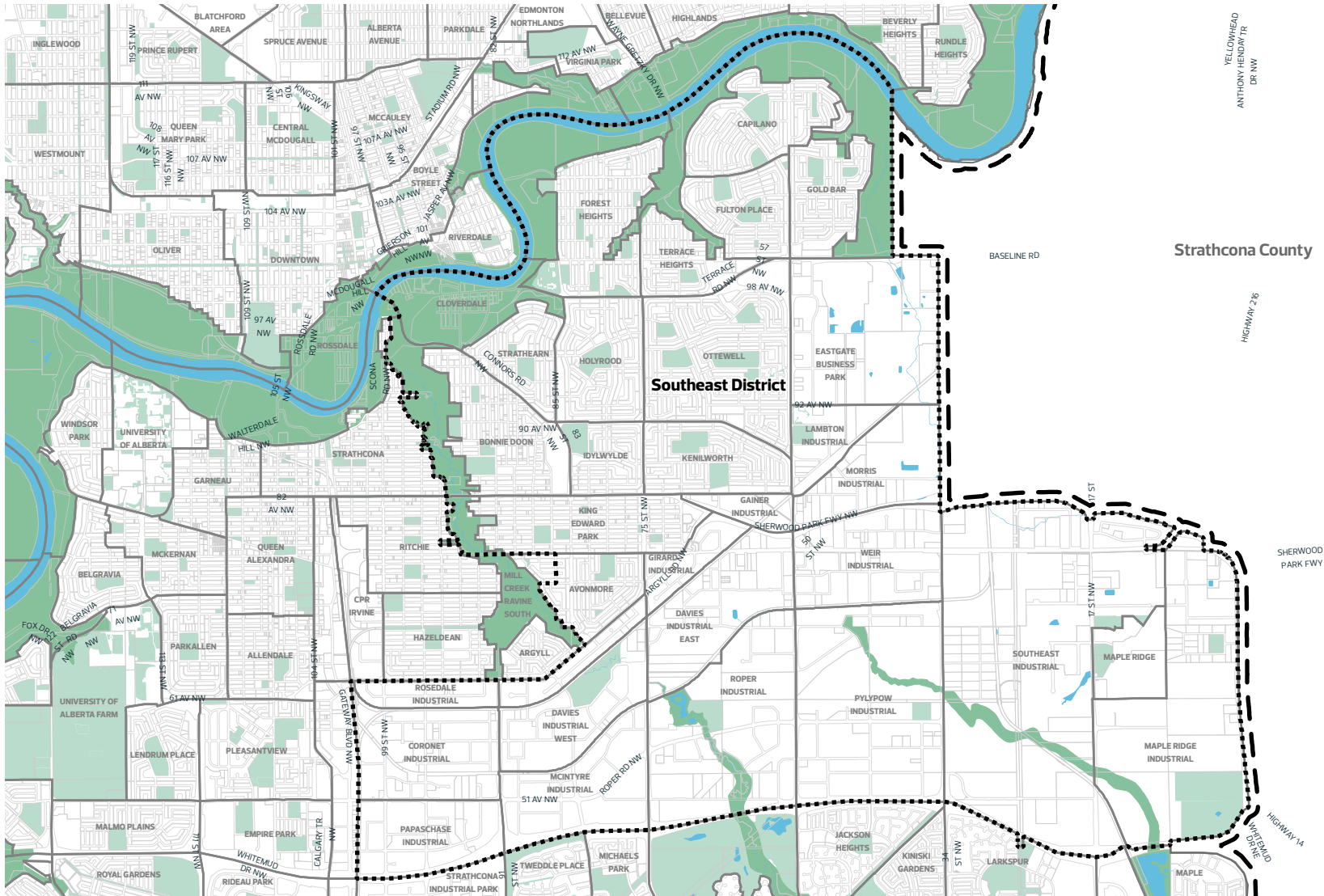
-  City Boundary
-  District Boundary
-  Neighbourhood Boundary
-  Water Body
-  North Saskatchewan River Valley and Ravine System (ARP)
-  Open Space - Current\*

\*Open space data is under review on an ongoing basis and subject to change



# Southeast

## NEIGHBOURHOOD MAP



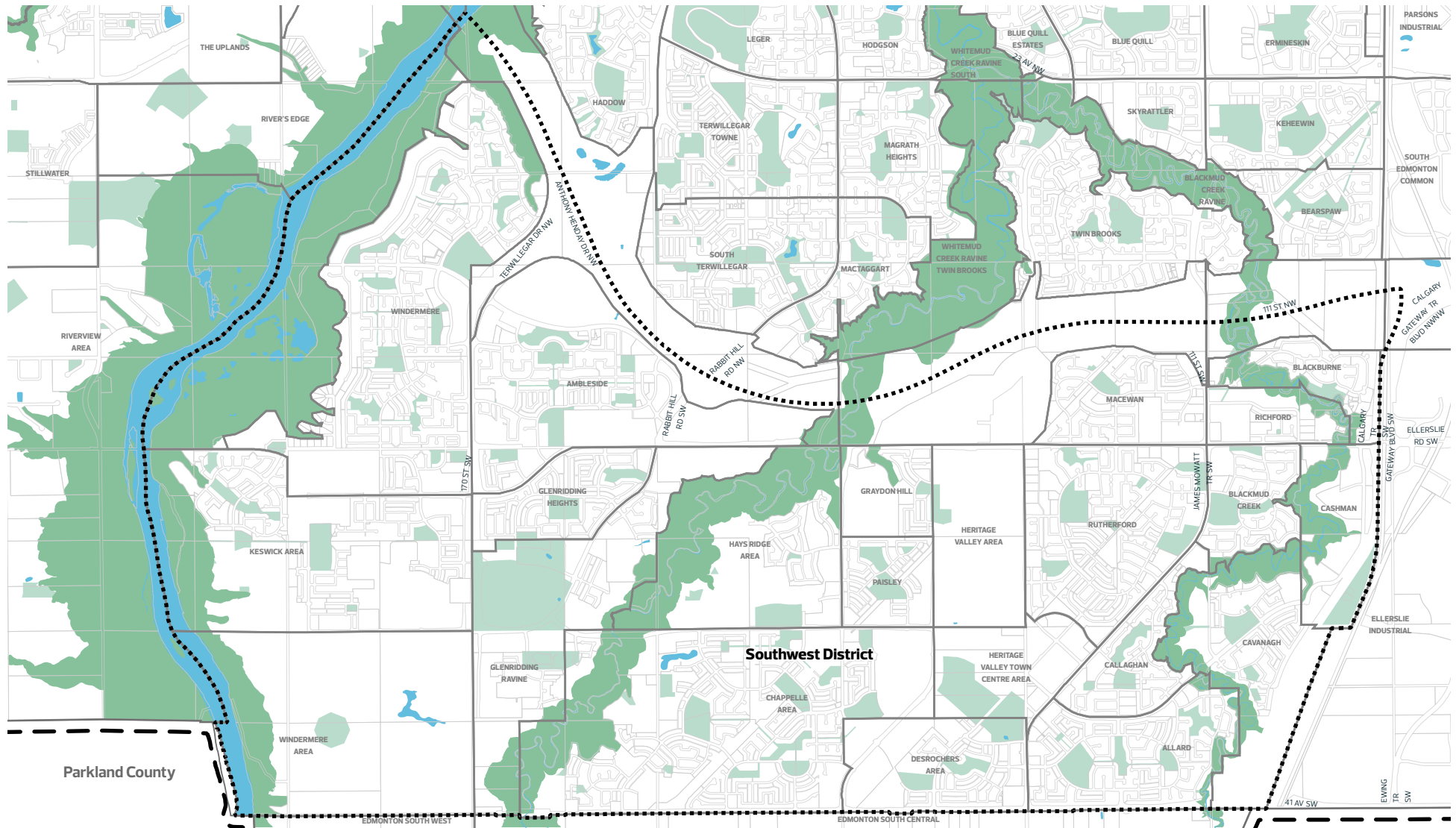
-  City Boundary
-  District Boundary
-  Neighbourhood Boundary
-  Water Body
-  North Saskatchewan River Valley and Ravine System (ARP)
-  Open Space - Current\*

\*Open space data is under review on an ongoing basis and subject to change



# Southwest

## NEIGHBOURHOOD MAP



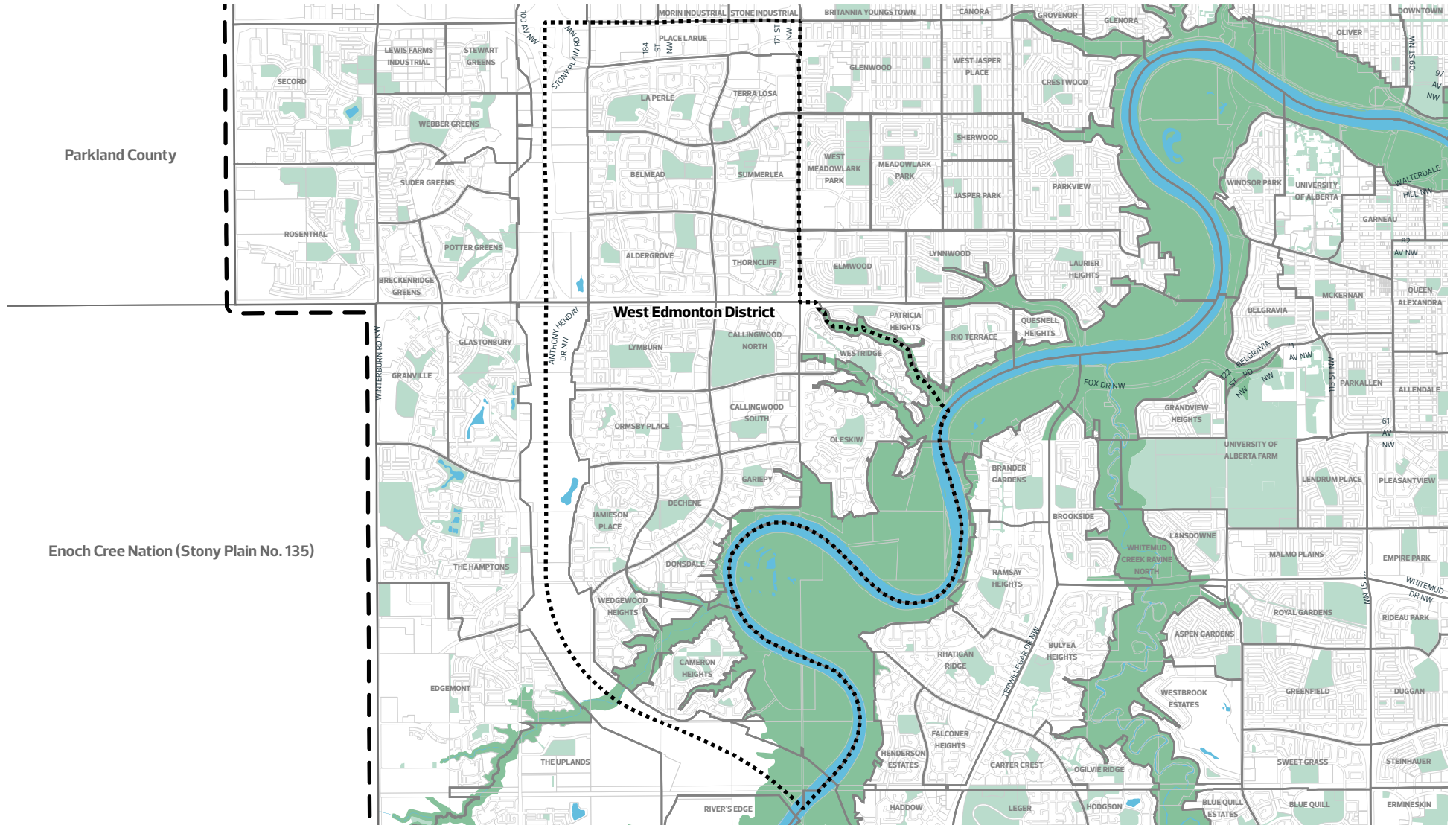
-  City Boundary
-  District Boundary
-  Neighbourhood Boundary
-  Water Body
-  North Saskatchewan River Valley and Ravine System (ARP)
-  Open Space - Current\*

\*Open space data is under review on an ongoing basis and subject to change



# West Edmonton

## NEIGHBOURHOOD MAP

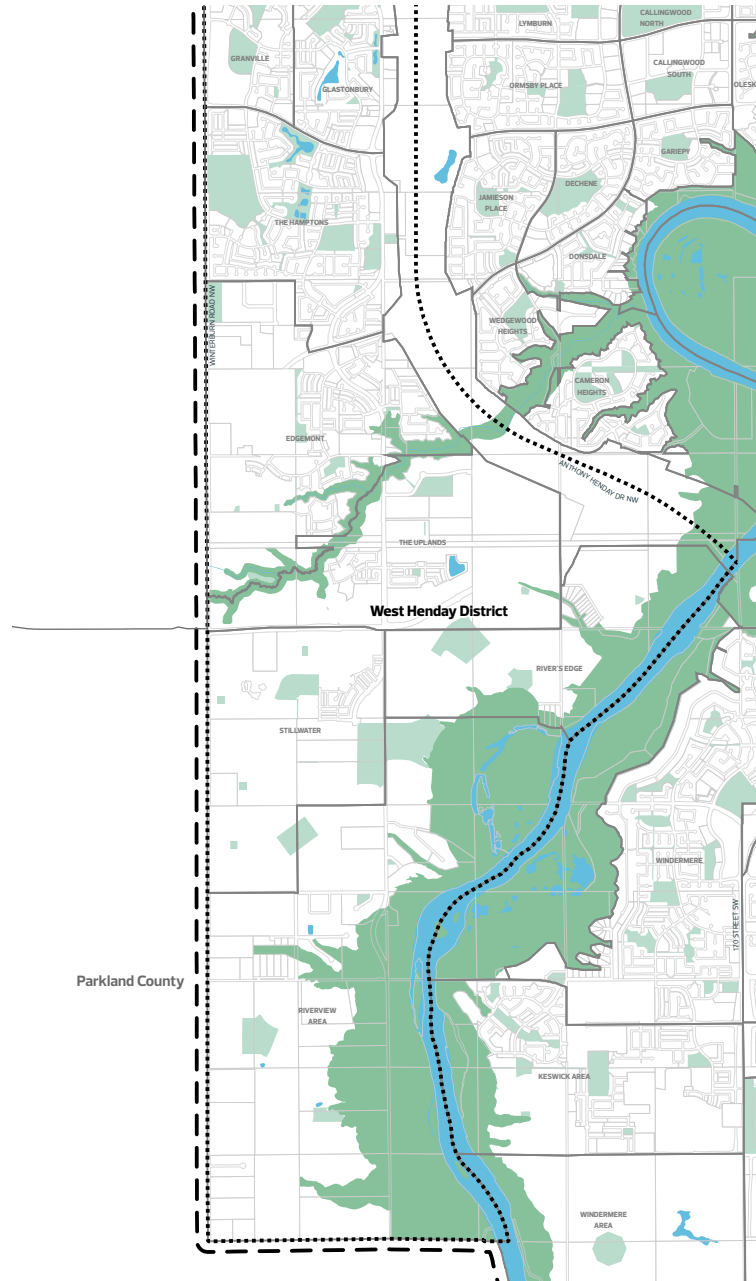
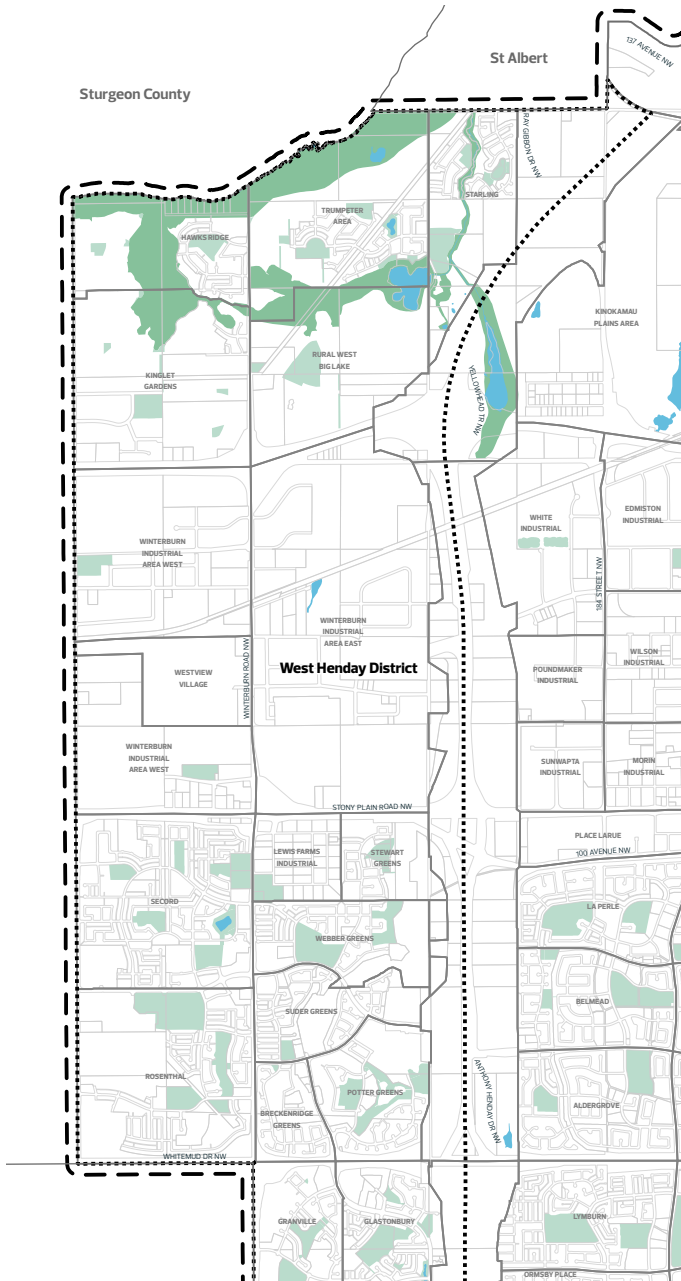








\*Open space data is under review on an ongoing basis and subject to change



# West Henday

## NEIGHBOURHOOD MAP



-  City Boundary
-  District Boundary
-  Neighbourhood Boundary
-  Water Body
-  North Saskatchewan River Valley and Ravine System (ARP)
-  Open Space - Current\*

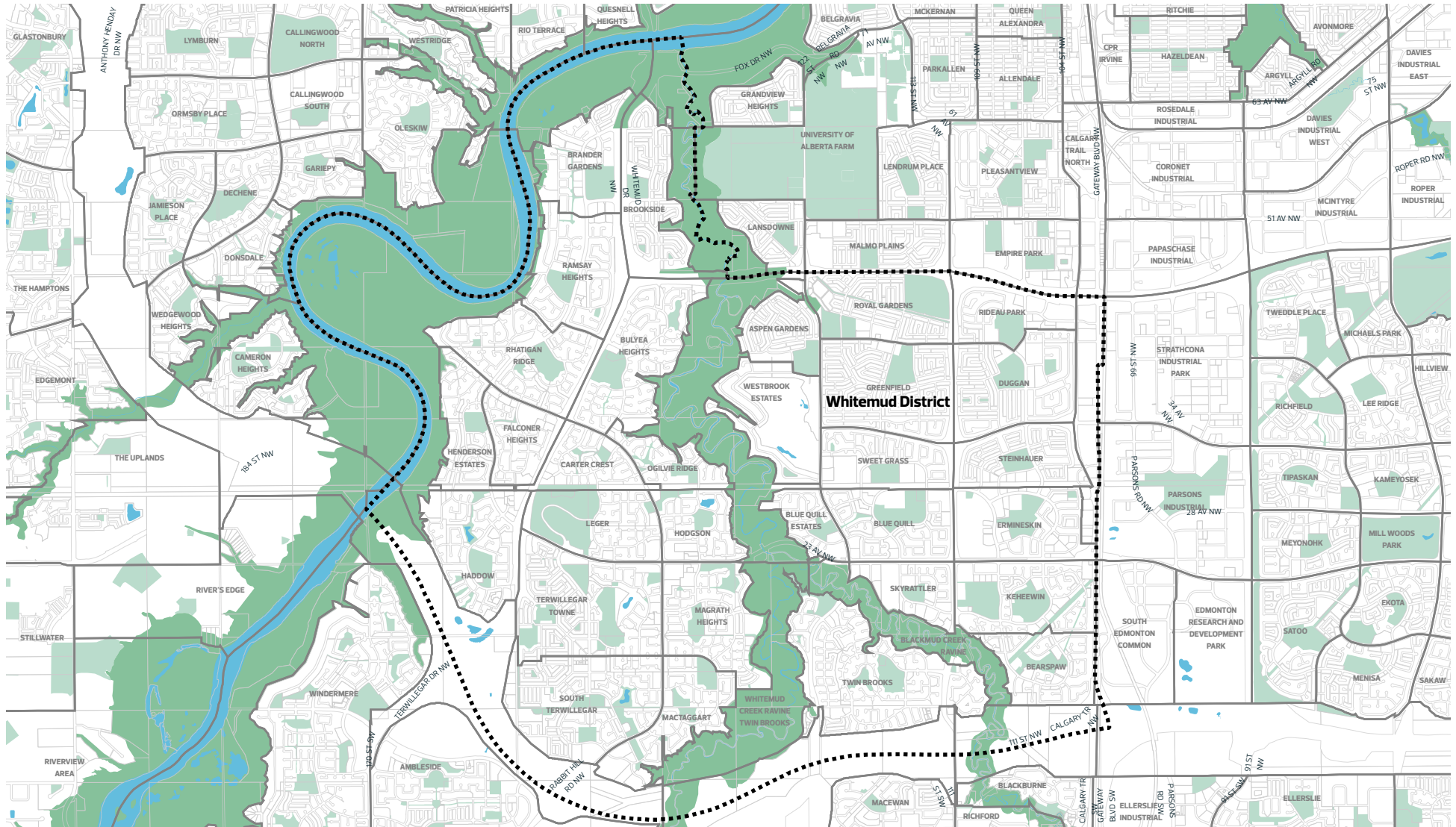


Scale: 1:70,000

\*Open space data is under review on an ongoing basis and subject to change

# Whitemud

## NEIGHBOURHOOD MAP



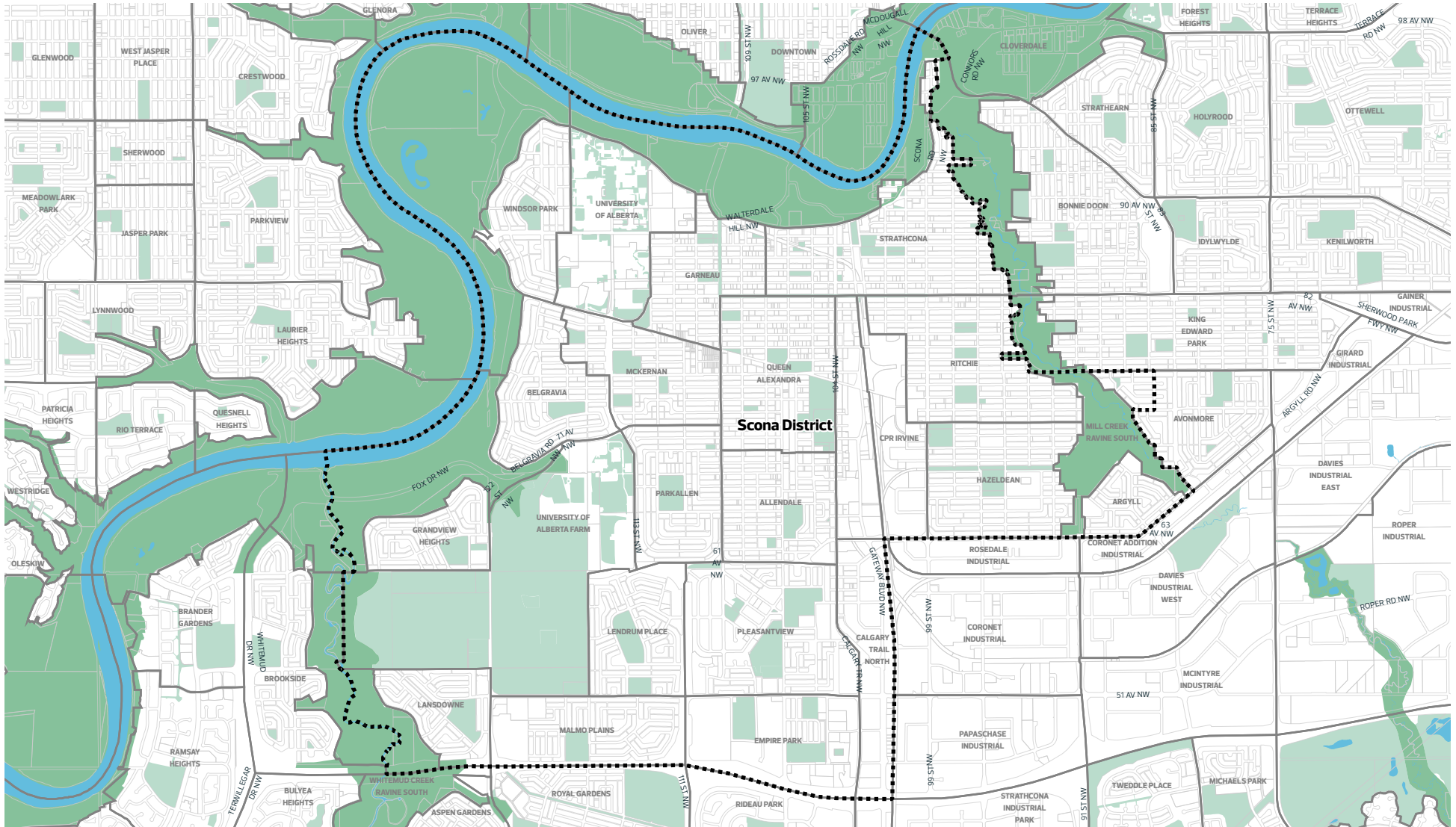
- City Boundary
- District Boundary
- Neighbourhood Boundary
- Water Body
- North Saskatchewan River Valley and Ravine System (ARP)
- Open Space - Current\*

\*Open space data is under review on an ongoing basis and subject to change



# Scona

## NEIGHBOURHOOD MAP



- City Boundary
- District Boundary
- Neighbourhood Boundary
- Water Body
- North Saskatchewan River Valley and Ravine System (ARP)
- Open Space - Current\*

\*Open space data is under review on an ongoing basis and subject to change

